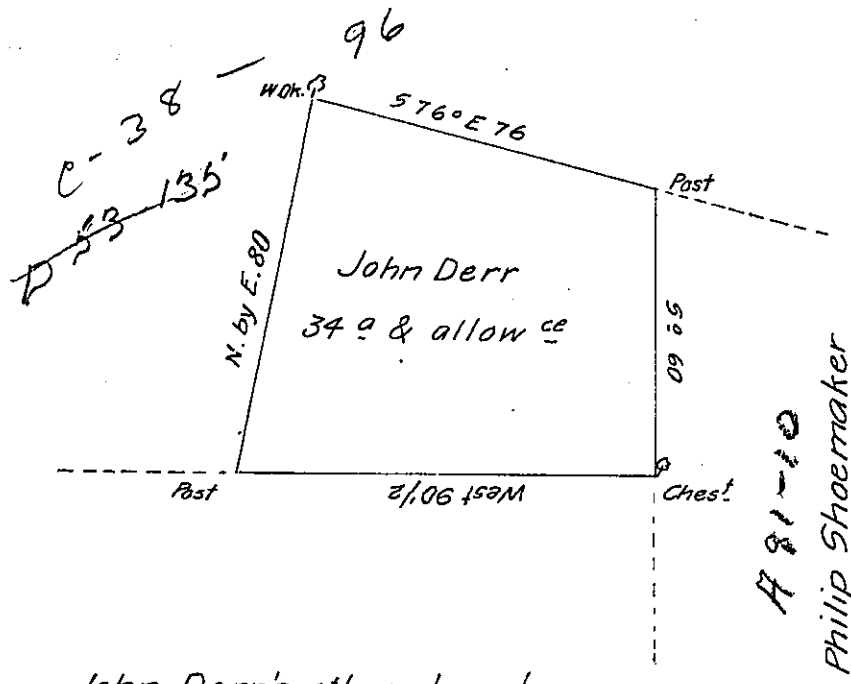


Daniel Schnider



John Derr's other Land

Survey'd to John Derr in right of Philip Shoemaker on the
 16th day of December 1765 the above discribed tract of thirty four acres
 & the usuall allowance of six P.Ct. Situate in Mountjoy Town^p. Lancaster
 County. By application of the 24th day of September 1765 N^o. 933.

Bartrem Galbraith D.S.

To Jn^o Lukens Esq^r }
 Surv^r. Generall. }

IN TESTIMONY that the above is a copy of the original remaining on file in
 the Department of Internal Affairs of Pennsylvania, made
 conformably to an Act of Assembly approved the 16th day of
 February, 1833, I have hereunto set my Hand and caused
 the Seal of said Department to be affixed at Harrisburg,
 this sixth day of October 1904

Loac R. Perry
 Secretary of Internal Affairs.